

Stay ahead of the curve with quality and efficiency.

Expertly engineered to streamline workflows and maximize the productivity your environment demands. Consistently up to the task, the CS 8353ci / 9003i Series Multifunction Systems effortlessly tackle your most challenging print, copy, scan and fax needs. You'll gain the advantage of powerful colored images, crisp text and detailed graphics, with multiple finishing options that uphold the professional look your business counts on. Long-lasting and ultra-reliable, these multifunctionals deliver the power and security to meet your high-speed, high-volume communication needs.

CS 8353ci / 9003i Series



Up to 90 ppm B&W / 70 ppm Color

Professional Finishing Options

HyPAS-enabled for Solutions & Apps

KYOCERA Net Manager Ready



**CS 8353ci / 7353ci
CS 9003i / 8003i / 7003i**

The CS 8353ci / 9003i Series Options



MT-730 (B)
7 Bin Mailbox



Copy Tray (D)



Keyboard Tray Kit



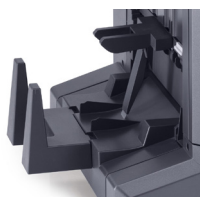
DF-7110
4,000 Sheet Finisher
65 Staple / 65 Manual Staple



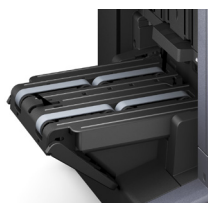
DF-7130
4,000 Sheet Finisher
100 Staple / 100 Manual Staple



DT-730 (B)
Original Hard Copy
Holder



BF-730
Booklet / Tri-fold Unit



BF-9100
Booklet / Tri-fold Unit



NK-7130
Numeric Keypad



Stapler Option
SH-10 for BF-730 / BF-9100
SH-12 for DF-7110
SH-14 for DF-7130

Hole Punch Option
PH-7A for DF-7110 / DF-7130



PF-730 (B)
2 x 500 Sheet Tray
(Ledger)



PF-740 (B)
2 x 1,500 Sheet Tray
(Letter)



PF-7130
500 Sheet MPT



PF-7120
3,000 Sheet Side Deck
(Letter)



General Specifications



CS 8353ci

Pages Per Minute:

Black — Letter: 83 ppm, Legal: 49 ppm, Ledger: 41 ppm,
12" x 18": 41 ppm (print only)

Color — Letter: 70 ppm, Legal: 42 ppm, Ledger: 35 ppm,
12" x 18": 35 ppm (print only)

Warm Up Time: 44 Seconds or Less (Power On)

First Page Out:

Copy: 4.8 Seconds or Less Black, 5.9 Seconds or Less Color
Print: 4.9 Seconds or Less Black, 6.1 Seconds or Less Color

Typical Electricity Consumption (TEC):

120V: 1.70 kWh/week;

220V: 1.68 kWh/week

Weight: 401.2 lbs

Maximum Monthly Duty Cycle: 450,000 Pages per Month

CS 7353ci

Pages Per Minute:

Black — Letter: 73 ppm, Legal: 43 ppm, Ledger: 36 ppm,
12" x 18": 36 ppm (print only)

Color — Letter: 65 ppm, Legal: 39 ppm, Ledger: 32 ppm,
12" x 18": 32 ppm (print only)

Warm Up Time: 44 Seconds or Less (Power On)

First Page Out:

Copy: 5.4 Seconds or Less Black, 6.2 Seconds or Less Color
Print: 5.3 Seconds or Less Black, 6.3 Seconds or Less Color

Typical Electricity Consumption (TEC):

120V: 1.43 kWh/week;

220V: 1.34 kWh/week

Weight: 401.2 lbs

Maximum Monthly Duty Cycle: 400,000 Pages per Month



CS 9003i

Pages Per Minute:

Black — Letter: 90 ppm, Legal: 54 ppm, Ledger: 45 ppm,
12" x 18": 45 ppm (print only)

Warm Up Time: 30 Seconds or Less (Power On)

First Page Out:

Copy: 3.6 Seconds or Less Black
Print: 4.0 Seconds or Less Black

Typical Electricity Consumption (TEC):

120V: 1.86 kWh/week;

220V: 1.81 kWh/week

Weight: 330.7 lbs

Maximum Monthly Duty Cycle: 450,000 Pages per Month

CS 8003i

Pages Per Minute:

Black — Letter: 80 ppm, Legal: 48 ppm, Ledger: 40 ppm,
12" x 18": 40 ppm (print only)

Warm Up Time: 30 Seconds or Less (Power On)

First Page Out:

Copy: 3.7 Seconds or Less Black
Print: 4.1 Seconds or Less Black

Typical Electricity Consumption (TEC):

120V: 1.47 kWh/week;

220V: 1.44 kWh/week

Weight: 330.7 lbs

Maximum Monthly Duty Cycle: 450,000 Pages per Month

CS 7003i

Pages Per Minute:

Black — Letter: 70 ppm, Legal: 42 ppm, Ledger: 35 ppm,
12" x 18": 35 ppm (print only)

Warm Up Time: 30 Seconds or Less (Power On)

First Page Out:

Copy: 4.2 Seconds or Less Black
Print: 4.8 Seconds or Less Black

Typical Electricity Consumption (TEC):

120V: 1.24 kWh/week;

220V: 1.21 kWh/week

Weight: 330.7 lbs

Maximum Monthly Duty Cycle: 400,000 Pages per Month

Common Specifications

Basic Specifications

Configuration: Multifunctional System —
Print/Scan/Copy/Optional Fax

Display: 10.1" Color Touch Screen Control Panel

Resolution: Up to 1200 x 1200 dpi

Memory / Hard Disk Drive: 4.5GB RAM / 8GB SSD /
320GB HDD Standard

Duplex: Standard Stackless Duplex Supports Statement
(5.5" x 8.5") to 12" x 18", 16 lb Bond - 142 lb Index
(60 — 256gsm)

Standard Output Tray: Statement — 12" x 18" / 70 sheets;
up to 12" x 48" Banner (Single Sheet)

Electrical Requirements: 120V, 60Hz, 12A; 220-240V,
50Hz, 10A

Dimensions: 27" W x 31.1" D x 41.5" H

Security Specifications

Local Authentication, Network Authentication, Encryption
Communication (IPsec, HTTPS, LDAP over SSL, SMTP/POP
over SSL, FTP over SSL, SNMPv3), TPM (Trusted Platform
Module), Secure Boot (Firmware Authenticity Verification),
Run Time Integrity Check, Data Security Kit (E) (HDD
Overwrite Mode and HDD Data Encryption), Common
Criteria (ISO15408 EAL2), IEEE 2600.2

Print Specifications

Standard Controller: Freescale QorIQ T1042 (Quad Core) /
1.2GHz (8353ci & 7353ci); Freescale QorIQ T1024 (Dual Core)
/ 1.4GHz (9003i, 8003i, & 7003i)

PDLs / Emulations: PRESCRIBE, PCL6 (PCL-XL / PCL-5c),
KPDLL3 (PS3), XPS, OPEN XPS; Optional (UG-34): IBM
ProPrinter, Line Printer, LQ-850

Print Resolution: Up to 1200 x 1200 dpi

Fonts: 136 KPDLL3, 93 PCL6, 8 Windows Vista, 1 Bitmap

OS Compatibility: Windows: 7/8.1/10/Server 2008/Server
2008 R2/Server 2012/Server 2012 R2/Server 2016; Novell
NetWare 3.x/4.x/5.x/6.x; Mac OS X v10.9 or later; Sun OS
4.1.x; Solaris 2.x; AIX; HP-UX (LPR)

Mobile Printing: Apple AirPrint®, Google Cloud Print™,
Mopria®, KYOCERA Mobile Print

Interfaces: Standard: 10/100/1000BaseTX, Hi-Speed
USB 2.0, 4 USB Host Interfaces, 2 Expansion Slots, IEEE
802.11b/g/n Wireless LAN (communication distance 98.5 ft)
Optional: 10/100/1000BaseTX (IB-50 for Dual NIC);
Optional: IEEE 802.11b/g/n (IB-51 for Wireless LAN Interface)
(communication distance 328.1 feet)

Network Print and Supported Protocols: TCP/IP, NetBEUI,
IPv4, IPv6, IPsec, HTTP, LPD, FTP, IPP, RawPort, LLTD, SNMP,
DHCP, SMTP, POP3, DNS, SNMPv1/v2, WSD Scan/Print
Drivers: KX Driver, PCL Mini Driver, KPDLL Mini Driver, KX
Driver for XPS, Network Fax Driver, TWAIN Driver, WIA
Driver, PPD for MAC, PPD for Linux

Utilities: KYOCERA Net Admin, KYOCERA Net Viewer,
KYOCERA Net Device Manager, PDF Direct Print, Command
Center RX

Paper Supply

Standard Paper Sources: Dual 500 Sheet Trays, Dual 1,500
Sheet Trays, 150 Sheet MPT, Auto Selection / Switching

Optional Paper Sources: Dual 500 Sheet Trays (PF-730 (B)),
Dual 1,500 Sheet Trays (PF-740 (B)); Side LCT: 3,000 Sheet
Capacity Tray
[PF-730 (B) and PF-740 (B) require PF-7130]

Paper Capacity: Standard: 4,150 Sheets;
Maximum: 7,650 Sheets

Paper Size:

Tray 1 — 5.5" x 8.5" — 12" x 18" (Statement to 12" x 18");
Tray 2 — 5.5" x 8.5" — 12" x 18", Custom Size;
Trays 3 & 4 — 8.5" x 11" (Letter)
PF-730 (B): 5.5" x 8.5" — 12" x 18";
PF-740 (B), PF-7120: 8.5" x 11";
MPT, PF-7130: 5.5" x 8.5" — 12" x 18" (Multiple Sheets);
Up to 12" x 48" Banner (Single Sheet)

Paper Weight: Trays: 16 lb Bond - 142 lb Index

(60 - 256gsm)

MPT & PF-7130: 16 lb Bond - 166 lb Index (60 - 300gsm)

Input Materials: Standard/Optional Trays: Plain, Bond,
Recycled, Preprinted, Vellum, Color, Pre-Punched, Thick,
Thin, High Quality, Letterhead, Envelope, Custom
MPT: Plain, Bond, Recycled, Preprinted, Vellum, Color,
Pre-Punched, Thick, Thin, High Quality, Transparency (OHP
film), Coated, Index Tab, Label, Letterhead, Envelope,
Custom

COPYSTAR

KYOCERA TECHNOLOGY

The CS 8353ci / 9003i Series goes well beyond printing, offering a portfolio of business applications for enhanced capabilities. Including scan distribution to back-end applications and document management systems, as well as print management to control devices, user policies and output costs.

Additional Specifications

Scan Specifications

Scan Type: Color and Black & White Scanner

Scan Resolution: 600 dpi, 400 dpi, 300 dpi, 200 dpi, 200 x 100 dpi, 200 x 400 dpi

File Formats: TIFF, JPEG, XPS, OpenXPS, PDF (MMR/JPG Compression / High Compression PDF / Encrypted PDF)

PDF Extension: Searchable PDF (OCR) Standard; MS Office File (Standard)

Scan Speeds (B&W/Color, @300 dpi):

Simplex: 120 ipm

Duplex: 220 ipm

Connectivity / Supported Protocols:

10/100/1000BaseTX, TCP/IP, Hi-Speed USB 2.0

Scanning Functions: Scan to Folder (SMB), Scan to Email, Scan to FTP, Scan to FTP over SSL, Scan to USB, WSD Scan, TWAIN Scan, Specified Color Removal, Border Erase, Preview

Original Size: Through DP: Statement to Ledger (5.5" x 8.5" — 11" x 17"); Glass: Up to 11" x 17"

Drivers: TWAIN/WIA Driver

Copy Specifications

Copy Resolution: 600 x 600 dpi

Image Mode: Text, Photo, Text/Photo, Graphic/Map

Continuous Copy: 1 — 9999 / Auto Reset to 1

Additional Features: Auto Magnification, Auto Paper Select, Auto Start, Auto Drawer Change, Interrupt Copy, Positive / Negative Reverse, Mirror Image, Rotate Copy, Border Erase, Split Copy, Electronic Sort, Margin Shift, Page Number, Form Overlay, XY Zoom, Prevent Bleed Through, Text Stamp, Bates Stamp, Blank Page Skip, Specified Color Removal, Preview, ID Card Copy

Job Management: 1,000 Department Codes, Job Programs, Job Build, Shortcut Keys, Repeat Copy

Color Adjustment: One Touch, Hue, Auto Exposure, Sharpness

Magnification / Zoom: Full Size, 4 Reduction, 4 Enlargement Preset Ratios, 25 — 400% in 1% Step Increments

Document Box: Custom Box, Job Box, Removable Memory Box, Fax Box (with optional Fax System)

Standard Document Processor

Type / Capacity:

Dual Scan Document Processor / 270 Sheets

Acceptable Originals: 5.5" x 8.5" — 11" x 17"

Acceptable Weights:

Simplex: 13 lb Bond — 120 lb Index

(35 — 220gsm); Duplex: 16 lb — 120 lb Index (50 — 220gsm)

Optional Fax Specifications

Fax Type: Fax System 12

Compatibility / Data Compression: G3 Fax / MMR, MR, MH, JBIG

Transmission Speed / Modem Speed: Less than 3 seconds / 33.6 Kbps

Fax Memory: Standard 170 MB

Driver: Network Fax Driver

Fax Functions: Network Fax, Duplex Transmission and Reception, Encrypted Transmission and Reception, Polling Transmission and Reception, Broadcast, Fax Server Integration, Fax Dedicated Paper Feeder

Output & Finishing Options¹

4,000 Sheet Finisher DF-710 & DF-7130

Stack / Staple Capacity: Main Tray (A): 4,000 Sheets; DF-710 Sub Tray (B): 200 Sheets / 65 Sheets (up to 24 lb Bond [90gsm]); DF-7130 Sub Tray (B): 200 Sheets / 100 Sheets (up to 21 lb Bond [80gsm])

Paper Size: 5.5" x 8.5" — 12" x 18"

Paper Weight: 14 lb Bond — 166 lb Index (52 — 300gsm)

Edge Staple Position: 3 Positions: Top Left, Bottom Left, Center Bind

Optional Punch: PH-7A 2 and 3 Hole Punch Unit, Supports 5.5" x 8.5" — 12" x 18"; 14 lb Bond — 166 lb Index (52 — 300gsm)

Dimensions:

DF-710: 23.9" W x 26.3" D x 41.8" H;

DF-7130: 29.5" W x 26.2" D x 43.7" H

Optional Booklet Folder / Tri-fold Unit:

DF-7110: BF-730 Booklet Folder supports 8.5" x 11", 8.5" x 14", 11" x 17"; Fold Booklet Staple: 16 lb — 24 lb Bond (60 — 90gsm) 20 sheets; 25 lb — 28 lb Bond (91 — 105gsm) 13 sheets; Higher than 28 lb Bond (Higher than 105gsm) 1 sheet; Fold booklet no staple: 16 lb — 24 lb Bond (60 — 90gsm) 5 sheets; 25 lb Bond — 72 lb Index (91 — 120gsm) 3 sheets; 32 lb Bond — 110 lb Cover (121 — 256gsm) 1 sheet; Trifold supports 8.5" x 11" only: 16 lb — 24 lb Bond (60 — 90gsm) 5 sheets; 25 lb Bond — 72 lb Index (91 — 120gsm) 3 sheets; 16 lb — 28 lb Bond (60 — 105gsm) 1 sheet

DF-7130: BF-9100 Booklet Folder supports 8.5" x 11", 8.5" x 14", 11" x 17"; Fold Booklet Staple: 16 lb — 24 lb Bond (60 — 90gsm) 20 sheets; 25 lb — 28 lb Bond (91 — 105gsm) 13 sheets; Higher than 28 lb Bond (Higher than 105gsm) 1 sheet; Fold Booklet No Staple: 16 lb — 24 lb Bond (60 — 90gsm) 5 sheets; 25 lb — 28 lb Bond (91 — 105gsm) 3 sheets; 29 lb Bond to 110 lb Cover (106 — 256gsm) 1 sheet; Tri-fold supports 8.5" x 11" only: 16 lb — 24 lb Bond (60 — 90gsm) 5 sheets; 25 lb — 28 lb Bond (91 — 105gsm) 3 sheets

Additional Options

Banner Guide 10, Internet Fax Kit (A), IC Card Authentication Kit (B), Gigabit NIC (IB-50), Wireless LAN IEEE 802.11b/g/n (IB-51), ThinPrint (UG-33), Emulation (UG-34), Document Tray (DT-730 [B]), Keyboard Holder 10, EFI Fiery Printing System 16 (Only available for the following models: 8353ci/7353ci), Numeric Keypad (NK-7130)

¹ Only 1 Output Option can be installed



Specifications and design are subject to change without notice. For the latest on connectivity visit copystar.com. Copystar, KYOCERA Net Manager, and Command Center RX are trademarks of the Kyocera Companies. AirPrint is a trademark of Apple, Inc. Google Cloud Print is a trademark of Google, Inc. Mopria is a trademark of Mopria Alliance, Inc. All other trademarks are the property of their respective owners.